

ENTER INTO DIGITAL DENTISTRY

AutoScan-DS-EX Pro(H)
AutoScan-DS-EX Pro(C)

Dental 3D Scanners



SHINING 3D
DENTAL



Importers & Dealers in Quality Dental Goods

125TH
YEAR

Meet AutoScan-DS-EX Pro(H)

Advanced Desktop Scanner

AutoScan-DS-EX Pro(H), developed and manufactured by SHINING 3D, is a 3D dental scanner with powerful functions for multiple applications covering scans of impressions, plaster models, articulators, implant abutments, etc. Its high-resolution cameras, advanced algorithms, and user-friendly interface bring you with superior data quality with optimal experience.



Flexible Workflow

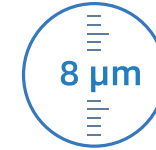
Set up your own workflow as you prefer, increasing work efficiency like never before. All-in-one and triple tray are available to get complete scan data with less steps.

Backstage Data Processing

Scan and backstage data processing can be carried out simultaneously, making the whole process more efficient.

Versatile Scan Modes

The new software associated with AutoScan-DS-EX Pro(H) can support versatile scan modes, including Multi Path Scan, High Quality Scan, AI Scan, Texture Scan, HDR Mode Scan, Reduce Brightness Scan, etc.



high Accuracy

Scan accuracy $\leq 8 \mu\text{m}$ assures reliable scan results, satisfying the requirements of various applications within the dental industry.



Unparalleled Details

Equipped with dual 5.0 MP high resolution cameras, the AutoScan-DS-EX Pro(H) can capture every detail of the scanned components meticulously.



Fast Speed

Bite scan: 7s
Upper/Lower jaw scan: 14s
1~4 dies scan: 18s
5~8 dies scan: 30s
Impression scan: 66s

Multiple Functions In AutoScan-DS-EX Pro(C) For All Fixed and Removable Restorations

On the basis of the original DS-EX Pro dental 3D scanner, SHINING 3D has launched an updated version and introduced the color texture high-speed scanning function. The new upgraded DS-EX Pro is versatile with simple operation and high efficiency. It satisfies the needs of various dental applications, including fixed and removable restorations, implants, orthodontics, etc.



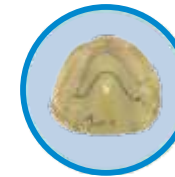
Variable Articulators Accomplishing Tasks in a Simple Manner

Compatible with static, dynamic and simple articulators for high efficiency. The scan tip's angle can be adjusted to the desired height, and has wider range of coverage of the whole model, improving the accuracy of occlusion scan.

*Suitable articulator: Bio-art, Kavo, SAM, Artex

Color Texture Scan in Details

Clearly captures the textures and marks on the plaster model. The unique HDR scan mode supports RPD wax and gingiva scan without spraying. Supporting dental technicians to easily complete the digital design of the RPD(removable partial denture).



Intelligent Scan

The software recognizes the working area automatically. The non-separate models can be scanned by one click, reducing the workload of technicians.



Intelligent software recognizes missing data sections

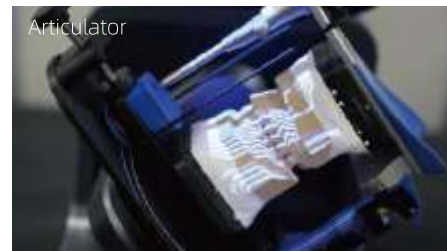
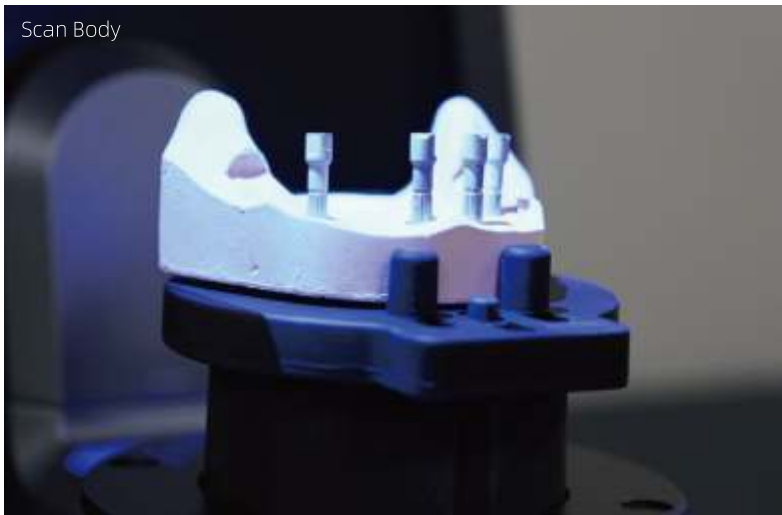
Automatic smart rescan

One-click scan capture all the data

Wide Range of Applications

Implant 3D Scanning

Keep details of edge and surface intact;
Optimize implant scanning process and improve scanning efficiency;
Support not only dynamic and static two scan modes for most common articulators, but also support articulator transfer for Artex, Kavo, SAM and Bio-Art articulators.



All-in-one



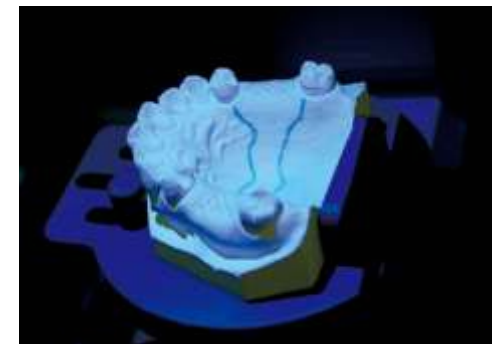
Non-separated Model



Triple Tray



Texture



Technical Specifications

AutoScan-DS-EX Pro(H)

Camera Resolution	2x5.0 MP
Accuracy	< 8 µm
Scanning Time	7s for bite scan; 14s for upper/lower jaw scan; 18s for 1-4 dies scan; 30s for 5-8 dies scan; 66s for impression scan.
Articulator Scan	Dynamic / static ; support articulator transfer
Output Format	STL, OBJ, PLY
Light Source	Blue Light
Dimensions	385 x 260 x 270 mm
Weight	5 kg
Interface	USB 3.0
Power Supply	DC 24 V

AutoScan-DS-EX Pro(C)

Camera Resolution	2x1.3 MP
Accuracy	< 10 µm
Scanning Time	8s for bite scan; 12s for upper/lower jaw scan; 13s for 1-4 dies scan; 21s for 5-8 dies scan; 58s for impression scan.
Articulator Scan	Dynamic/ static ; support articulator transfer
Output Format	STL, OBJ, PLY
Light Source	Blue Light
Dimensions	385 x 250 x 270 mm
Weight	5 kg
Interface	USB 3.0
Power Supply	DC 24 V

[1] The scan speed of impression is under high speed scan mode. RTX 30 series graphic card can not support AI function for all intraoral scanners and lab scanners.

[2] Notice: SHINING 3D reserves the right to explain any alteration of the specifications and pictures.