

JUST SCAN IT

Aoralscan 3 Wireless
Aoralscan 3

Intraoral Scanners

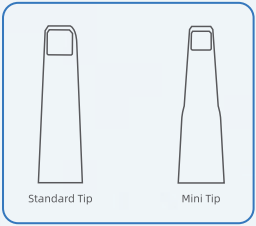


SHINING 3D
DENTAL



Importers & Dealers in Quality Dental Goods

125TH
YEAR



Aoralscan 3 Wireless

No constraints of cables. Enjoy the freedom of wireless scanning.

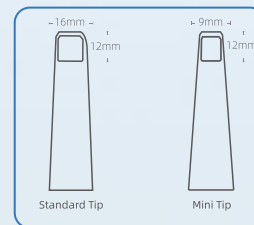
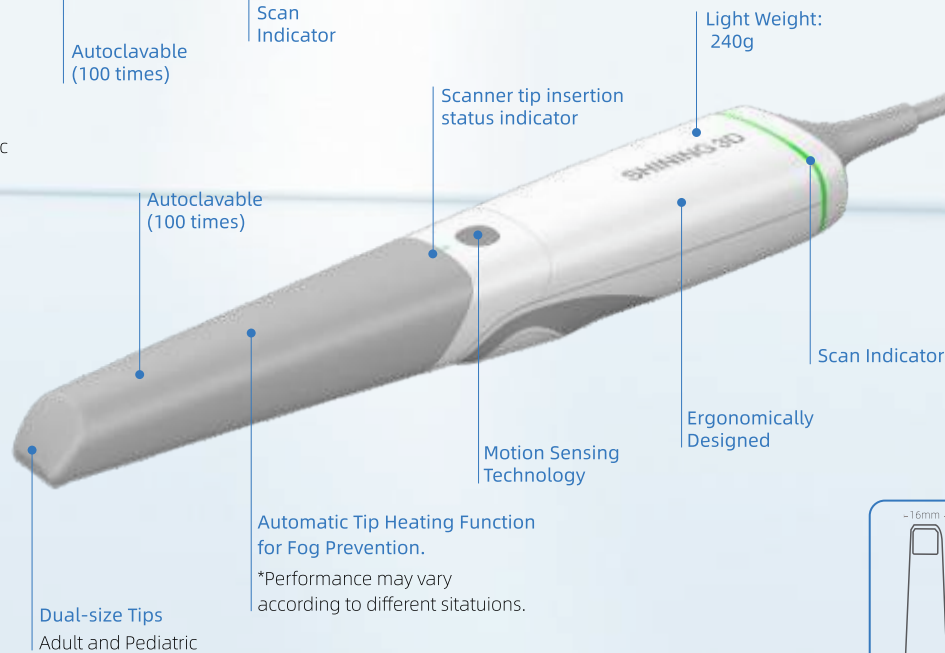
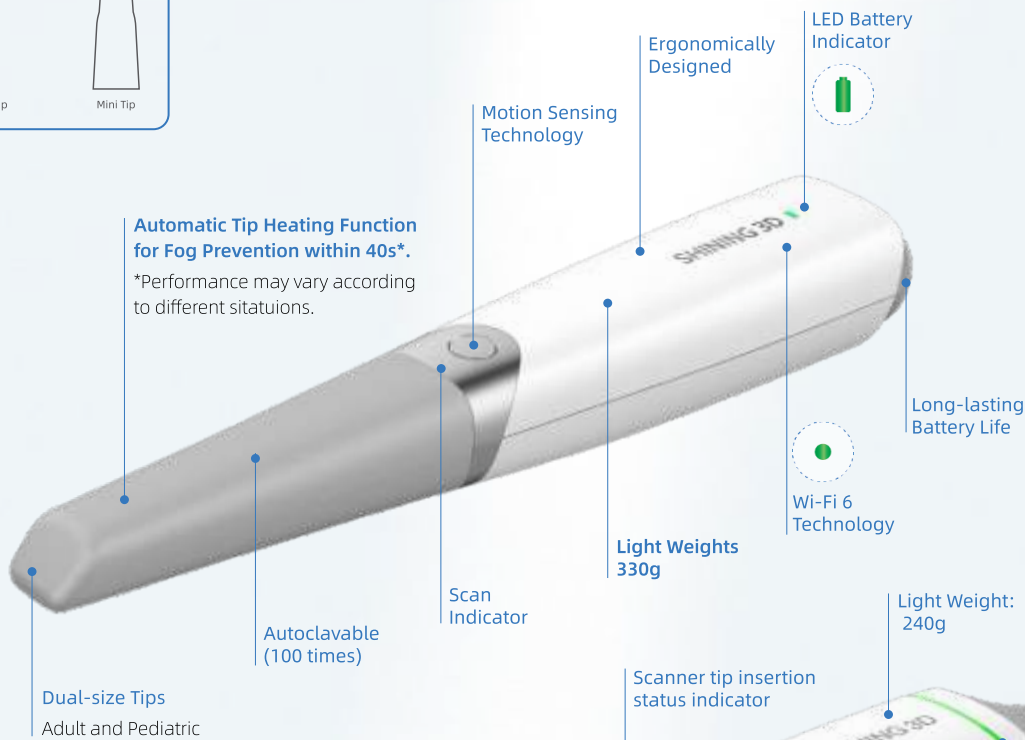
Equipped with the latest Wi-Fi 6 technology, the Aoralscan 3 Wireless gives you the same fast scanning experience as a wired connection without lag.

Aoralscan 3 Wireless provides reliable, consistent, and accurate scan output.

Aoralscan 3

Say hello to SHINING 3D intraoral scanner, Aoralscan 3! Exceptional, smart and elegant, Aoralscan 3 improves the overall clinical experience. It allows users to easily acquire vivid digital impressions in a faster and more accurate way.

Moreover, Aoralscan 3 comes with a wide range of different intelligent functions, guaranteeing more comfortable chairside experience and efficient clinic collaboration.



Powerful Scanning Assistance



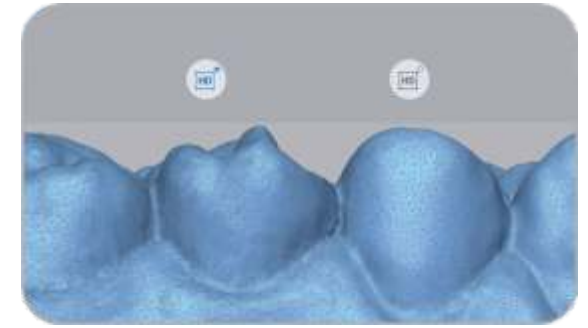
AI Scanning

Automatically identifies and filters out miscellaneous data, resulting in a quicker and neater scan process.



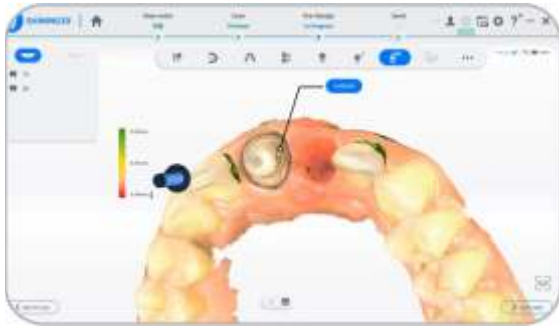
Motion Sensing

Scans with minimal contact with computer, ensuring a safe and efficient scan experience.



Refined Scan

Refines the restoration area to help obtain clear margin data and more detailed surface data.



Undercut Check

During the scanning process, the undercut value can be displayed for easy judgement by the dentist.



Bite Check

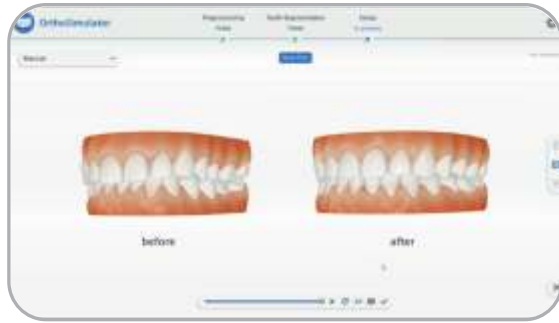
Ensures accurate occlusal relationship for subsequent applications.



Margin Line Auto Extraction

Allows quick identification of margin lines, which helps communicate between dentist and technician.

Next-level Software Functions



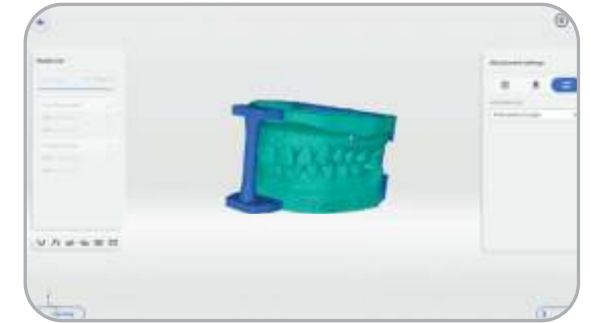
Ortho Simulation

The whole treatment process can be simulated and patient will be able to see the post-treatment effect in advance, extremely effective for consultation process.



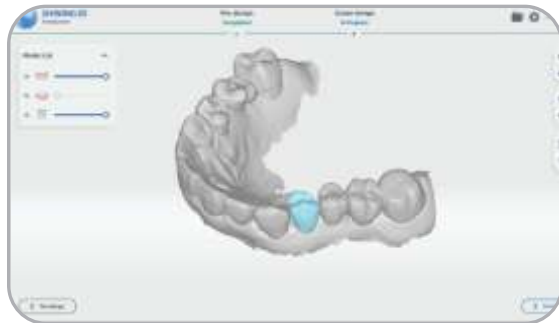
Oral Health Report

Visually demonstrates patients' comprehensive oral health condition, dramatically improving dentist-patient communication efficiency.



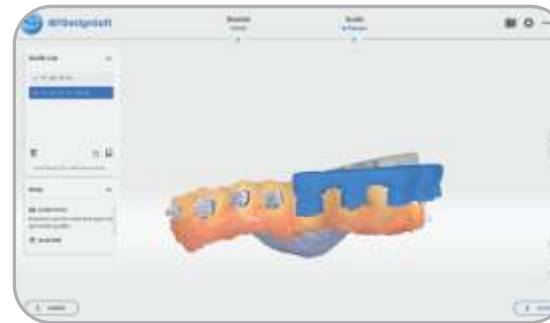
Model Creator

Orthodontic or restoration models can be easily designed for following printing process.



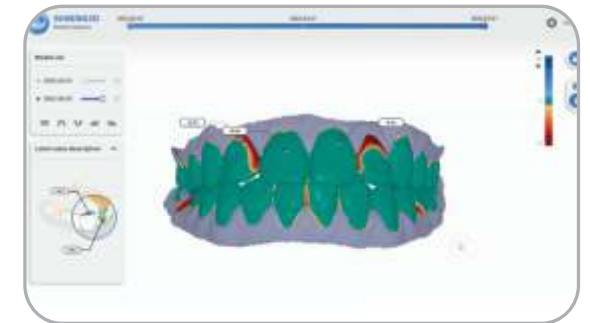
Temp Design

Temporary crowns can be designed and printed in the office, reducing the patient's waiting.



IBT Design

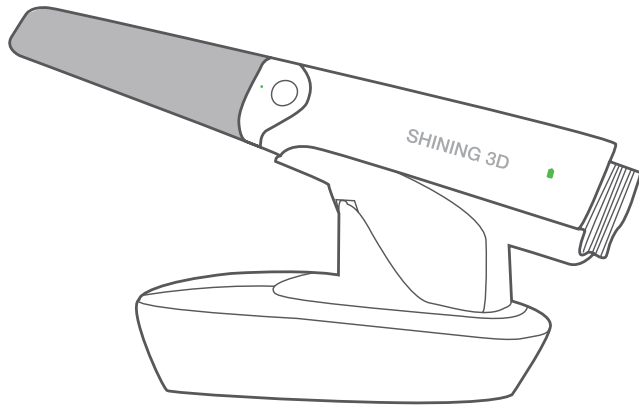
Designs indirect bonding tray, which can be directly 3D printed to help orthodontists attach brackets faster and more accurately.



Data Track

Helps patients understand oral changes and improve the efficiency of dentist-patient communication by tracking patient data.

Long-lasting Battery Life



Each Aoralscan 3 Wireless scanner is equipped with 3 batteries and a charging hub.

2
hours

24h continuous scanning.

10
days

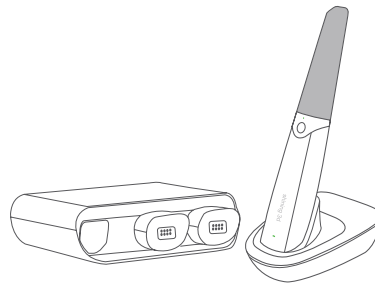
10 days sleep mode.

2
min

2 min case scanning time:
(Maxillary + mandibular + occlusion)
*Performance may vary according to
different situation.

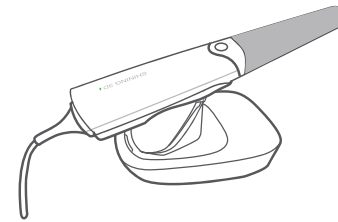
60
cases

can be utilized
for 60 cases



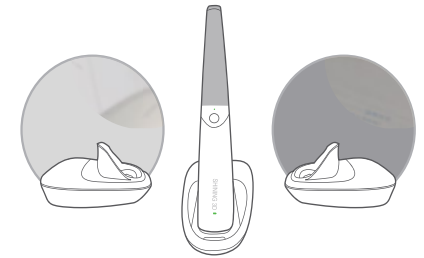
Charging Cradle

When finished scanning, you can put the Aoralscan 3 Wireless back onto the cradle to charge.



Wired Connection

Wired scan option is included as well.



Multi-cradle Adaptable

The scanner can adapt to multiple cradles. Pick up the device and switch between multiple chairs.



SHINING 3D Dental Cloud

Optimal Dentist-technician Collaboration

Standard and Unlimited - Seamless Collaboration between Dentists and Technicians
SHINING 3D Dental Cloud allows for data transfer and communication between dental clinics and labs.



Dashboard

Visual data management center to assist institutional management.



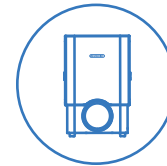
Data Assessment

Streamlines scan data confirmation process between dentists and technicians.



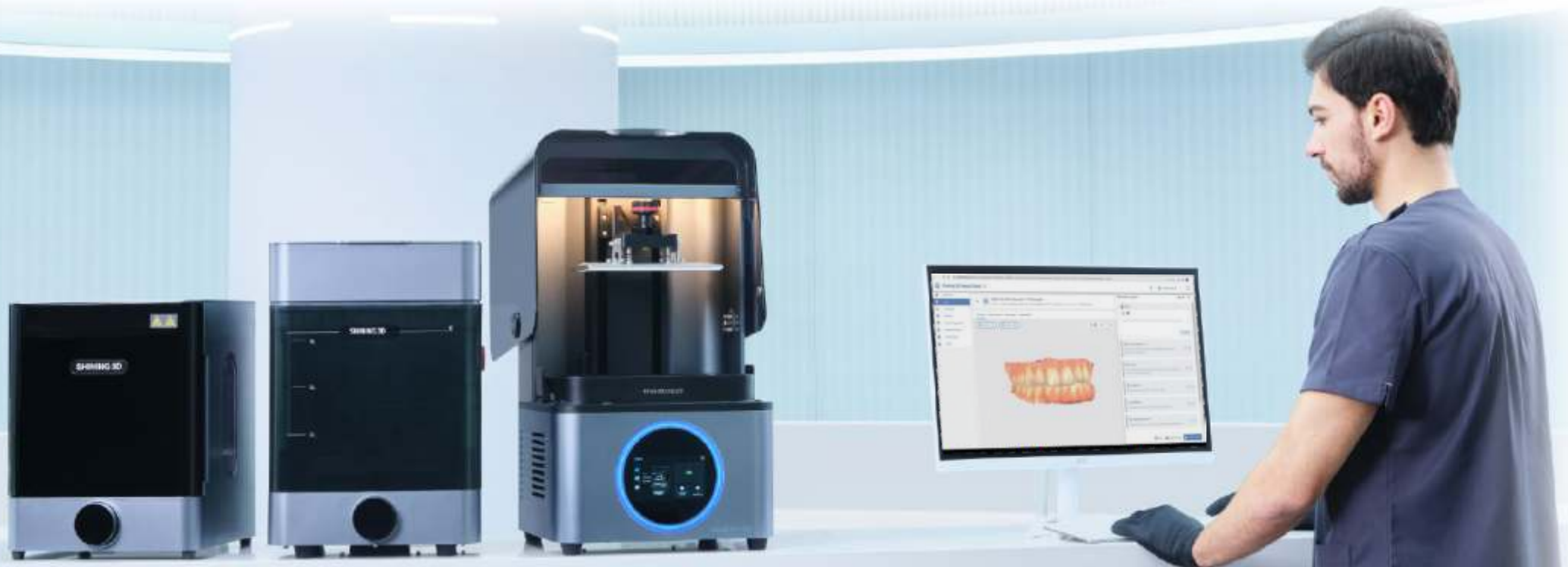
Patient Management

Convenient tool to check patients' past medical records at any time.



Printer Management

Monitors and manages the printers in real time to improve production efficiency.



Capture Digital Impressions in Real Time

Fast, Accurate and Exceptional Scan Performance



Single Arch
25s

Faster Scan

The scan speed is 30% faster than the last generation due to Aoralscan 3's drastically upgraded scanning technology.

30% ↑

More Accurate Scan

Thanks to optimized algorithms and imaging mechanisms, Aoralscan 3 carries out more accurate and precise results by 30%, meeting the clinical needs of different applications.

15%

Longer Scan Tip

Slimmer and 15% longer autoclavable scanner tips offer patients a more comfortable clinical experience.

up to
22mm

Greater Scan Depth

Aoralscan 3 is suitable for various clinical scenarios including acquiring scan bodies and periodontal scans.

“

The Aoralscan 3 has increased the perception of our practice, it certainly puts us at the forefront of technology; our patients see the process that we're taking to increase our ability as practitioners to provide the ultimate care for our patients. If you're looking to move into the digital world, I would certainly recommend the Aoralscan 3 by SHINING 3D.

- Dr. Troy Schmedding DDS, AAACD ”

Technical Specifications

Aoralscan 3 Wireless

Scan Field	Standard tip: 16 × 12 × 22 mm Small tip: 12 × 9 × 22 mm
Scan Principle	Non-contact scanner with structured light
Scan Depth	-2 mm to 20 mm from exit surface of tip
Scan Tip Sterilization	Autoclave 100 times 121°C 102.9kPa 30 min 134°C 205.8kPa 4 min
Scan Tip Heating	40s instant heating(Anti-fogging)
Weight	330 ± 20 g (includes battery, tip)
Dimension (L × W × H)	275 mm × 46 mm × 40 mm (includes battery, tip)
Output	STL, OBJ, PLY
Connector	USB 3.0
Power Input	12V DC/3 A
Wireless Technology	Wi-Fi 6(802.11a/n/ac/ax)
Effective Wireless Range	Same room, up to 5m
Battery Life	2 Hours of continuous scanning. 10 days in sleep mode.

Recommended PC Configuration

CPU	Intel Core® i7-11700H / Intel Core® i7-10700F Minimum: Intel Core® i7-8700F Recommended: Intel Core® i7-11800H
RAM	Minimum: 16 GB / Recommended: 32 GB
Hard Drive	Minimum: 256 GB SSD / Recommended: 2TB SSD
Graphic Card (GPU)	NVIDIA RTX 2060 / 2070 / 3060 / 3070 / 3080
Operating System	Windows 10/11 Professional (64-bit)
Screen Resolution	1920 × 1080, 60Hz or higher
I/O Ports	More than 2 type-A USB 3.0 (or higher) ports

Aoralscan 3

Scan Field	Standard tip: 16 × 12 × 22 mm Small tip: 12 × 9 × 22 mm
Scan Principle	Non-contact scanner with structured light
Scan Depth	-2 mm to 20 mm from exit surface of tip
Scan Tip Sterilization	Autoclave 100 times 121°C 102.9kPa 30 min 134°C 205.8kPa 4 min
Anti-fogging heating	Autoclave 100 times 121°C 102.9kPa 30 min 134°C 205.8kPa 4 min
Weight	240 ± 10 g (without cables)
Dimension (L × W × H)	281 × 33 × 46 mm
Output	STL, OBJ, PLY
Connector	USB 3.0
Power Input	12V DC/3 A

Recommended PC Configuration

CPU	Intel Core i7-8700 or higher
RAM	16 GB or higher
Hard Drive	256 GB SSD or above
Graphic Card (GPU)	NVIDIA RTX 2060 6GB or higher
Operating System	Windows 10 Professional (64-bit) or later versions of Windows operating system
Screen Resolution	1920 × 1080, 60Hz or higher
I/O Ports	More than 2 type-A USB 3.0 (or higher) ports

📍 1102 Embassy Chambers, 3rd Road, Khar West, Mumbai - 400052, India
 ☎️ +91 22 6127 7777 📞 +919930006127 ✉️ sales@nkpatelandsons.com
 🌐 www.nkpatelandsons.com 📺 @nkpatelandsons 📷 /nkpatelandsons